



SOUTH FORK KINGS

Groundwater Sustainability Agency

DRAFT Well Mitigation Program

August 2025

Prepared by:

Geosyntec
consultants

Prepared for:

 **SOUTH FORK KINGS**
GROUNDWATER SUSTAINABILITY AGENCY

Table of Contents

1	Introduction	1
1.1	Description of South Fork Kings GSA	1
1.2	Mitigation Program Partners	3
2	Mitigation Program Overview.....	4
2.1	Active Program Management.....	7
3	Mitigation Program Tracks.....	8
3.1	Well Mitigation Track Description.....	8
3.2	Technical Assistance Track Description.....	8
4	Well Mitigation Claims Process.....	10
4.1	Well Mitigation Track Process.....	10
4.1.1	Mitigation Actions	13
4.1.1.1	Interim Well Mitigation Actions.....	13
4.1.1.2	Long-Term Mitigation Actions	13
4.2	Technical Assistance Application Process	15
4.3	Claims Dispute	17
4.4	Indemnification.....	17
5	Eligibility Criteria.....	18
6	Mitigation Program Outreach	20
7	Well Registration.....	21
8	Funding.....	22

List of Figures

Figure 1-1. South Fork Kings GSA Boundary	2
Figure 2-1. Mitigation Program Procedures Outline	6
Figure 3-1. Mitigation Program Track Guideline	8
Figure 4-1. Domestic Well Mitigation Track Guideline.....	12
Figure 4-2. Technical Assistance Track	16
Figure 5-1. South Fork Kings Well Mitigation Eligibility Criteria.....	19

List of Tables

Table 4-1. Long-Term Mitigation Measures for Domestic Wells	14
---	----

ATTENTION!

If you have experienced a loss of drinking water, please contact **South Fork Kings GSA** at **(559) 585-9011**. The GSA is available to assist with accessing emergency drinking water and interim drinking water supplies. For claims regarding drinking water wells (including agricultural wells used for drinking water purposes), please fill out the online form on the GSA website listed below or contact the GSA directly.

SOUTH FORK KINGS GSA

Office: 321 C Street, Lemoore

Phone Number: (559) 585-9011

Website: <https://southforkkings.org>

Email: office@southforkkings.org

General Manager: Johnny Gailey

1 Introduction

On September 16, 2014, Governor Jerry Brown signed into law a three-bill legislative package, composed of Assembly Bill 1739 (Dickinson), Senate Bill 1168 (Pavley), and Senate Bill 1319 (Pavley), collectively known as the Sustainable Groundwater Management Act (SGMA) and is codified in Section 10720 et seq. of the California Water Code. In his signing statement, Governor Brown emphasized that “groundwater management in California is best accomplished locally.” This legislation created a statutory framework for groundwater management that can be sustained during the planning and implementation horizon without causing undesirable results.

SGMA requires high and medium-priority basins to achieve sustainability by avoiding undesirable results. These basins should reach sustainability within 20 years of implementing their sustainability plans. For critically over-drafted basins, like the Tulare Lake Subbasin, the deadline for achieving sustainability is 2040.

The Tulare Lake Subbasin (Subbasin) has five groundwater sustainability agencies (GSAs), including the South Fork Kings GSA, working together to achieve sustainability. To comply with the requirements of SGMA, the GSAs have prepared coordinated groundwater sustainability plans (GSPs). Each of the GSAs submitted additional local information in so-called ‘blue pages’ as part of adopting their GSPs and each is considered a separate GSP. The GSPs present the strategy to achieve Subbasin sustainability by 2040. The South Fork Kings GSA Well Mitigation Program (“Mitigation Program” or “Program”) is considered part of the SFK GSP.

The South Fork Kings GSA has agreed to implement this Mitigation Program to provide emergency and interim drinking water supplies and implement long-term solutions for households reliant on domestic and multi-use wells that have lost access to drinking water as a result of groundwater pumping occurring after January 1, 2015, causing dry wells, lost well production or experiencing groundwater quality degradation.

The GSAs will fund administration, outreach, analyses, technical assistance and mitigation services necessary to restore drinking water access for households impacted by groundwater pumping. While households may lose access to drinking water for many reasons, the purpose of this Program is to avoid or address impacts caused by groundwater management activities after January 1, 2015.

1.1 Description of South Fork Kings GSA

The SFK covers an area of approximately ±71,313 acres in the Tulare Lake Subbasin. The boundary of SFK is presented in Figure 1-1.

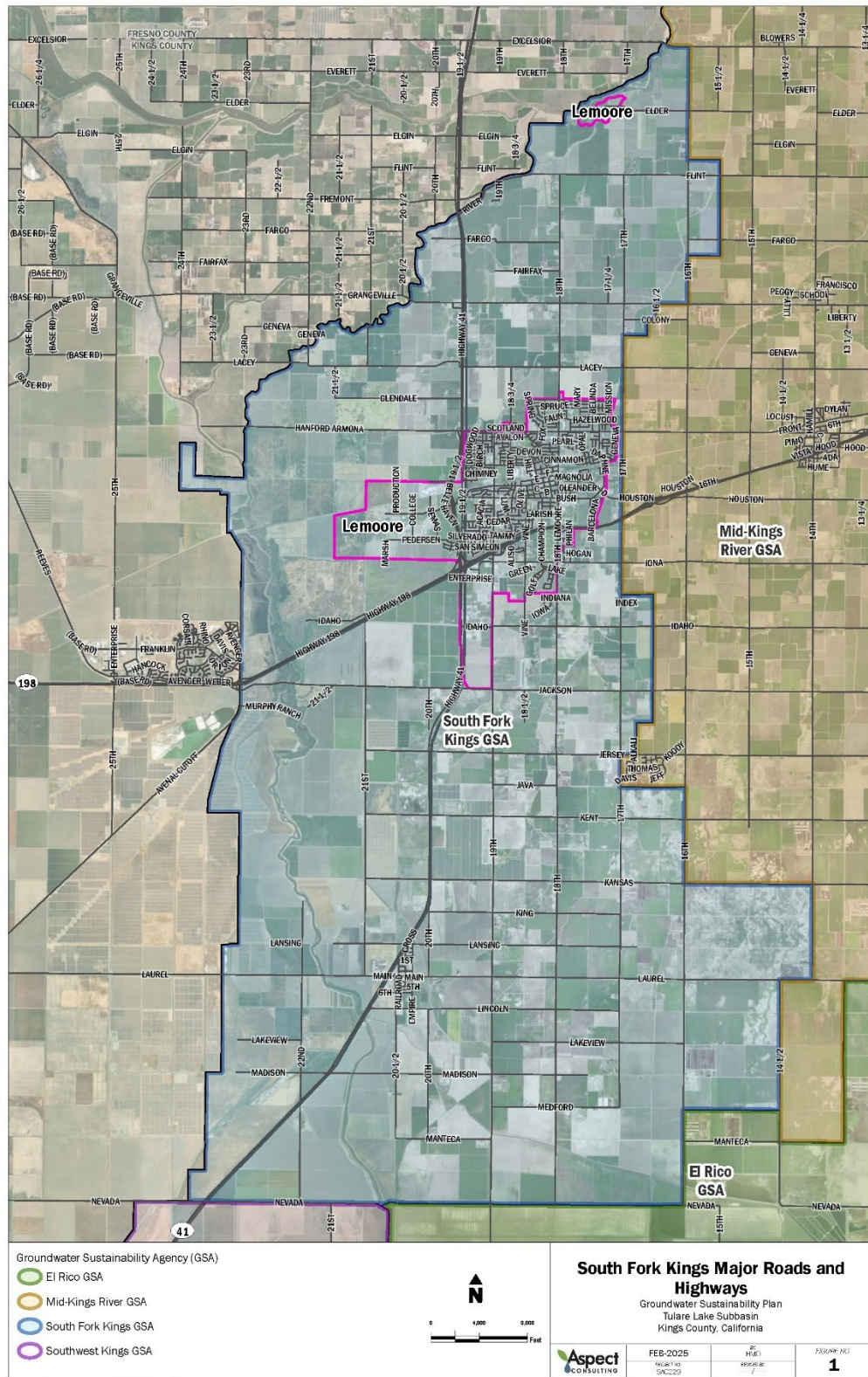


Figure 1-1. South Fork Kings GSA Boundary

1.2 Mitigation Program Partners

The GSA will likely collaborate in the future with Program Partners for program administration, program outreach, and/or general implementation. The Mitigation Program will be implemented upon approval by the SFK GSA Board and adjusted at a later date as Program Partners are identified. At this time, SFK is evaluating different options for Program Partners to help meet the needs of the Mitigation Program and ensure that the needs of impacted well owners are addressed quickly and efficiently. The Program Partners may be responsible for providing interim drinking water, long-term mitigation support, and educational resources on well stewardship.

The agreement between the GSA and Program Partners will state that it is the GSA's responsibility to cover the costs incurred in implementing the Mitigation Program. This includes costs associated with supplying emergency water, interim supplies, and long-term mitigation measures.

For the purpose of this document, the GSA is listed as the lead agency and the document will be updated in the future to reflect Program Partners.

2 Mitigation Program Overview

The Mitigation Program serves to address undesirable results that may result from groundwater pumping in the GSA. Domestic well owners and communities reliant on groundwater wells for domestic uses have been identified as vulnerable due to the shallow depths typical of domestic wells. While avoiding the need for mitigation all together is ideal, the GSA recognizes the importance of preparation for unintended impacts.

Due to the varying operational uses of groundwater wells throughout the subbasin, the Mitigation Program is branched into two separate tracks. An impacted well owner (Claimant) can either be placed in the Well Mitigation Track or the Technical Assistance Track depending on the operational use of the impacted well. More information on the program tracks is provided in Section 3.1 for the Well Mitigation Track and Section 3.2 for the Technical Assistance Track.

Regardless of the mitigation track designated for a claimant, the following steps will be conducted to successfully implement the Mitigation Program and complete a claim:

1. **Outreach:** Outreach will be conducted by the GSA to communities and well owners at risk of having impacts on their wells from declining groundwater levels. The primary focus of these outreach efforts will be to provide resources that connect well owners to the GSA and spread awareness of the Mitigation Program.
2. **Well Impact Recognition:** Well owners will be able to self-identify the need for well mitigation (i.e. recognize that the well has a problem). The well owner will contact the GSA either by phone or through the website to request well mitigation assistance.
3. **Interim Drinking Water Supplies:** The GSA will review the submitted application and provide emergency water and interim services as needed. Additional information or historical records may be requested from the well owner to better assess the claim.
4. **Mitigation Qualification:** The GSA will review the provided information to decide whether the claim is eligible for the Mitigation Program.
5. **Mitigation Needs Assessment:** Qualified professionals will inspect the condition of the impacted well and report their assessment(s) to the GSA. The GSA will propose a suitable final long-term mitigation measure for eligible claims.
6. **GSA Approval:** The GSA Board will review the Long-Term Mitigation proposal, along with any Terms of Award and cost estimate, and will either motion to move forward with the proposed mitigation or seek alternative mitigation measures.
7. **Mitigation Measure Agreement:** The Claimant will review the mitigation measure(s) approved by the GSA Board and sign an indemnification agreement with the GSA.
8. **Mitigation Award:** Once the GSA Board approval is obtained, the GSA will implement the agreed mitigation measures.

The intent of this Mitigation Program is to assist domestic well owners who have been impacted by groundwater pumping. The GSA will provide guidance to all well owners regarding their claim.

The outline of the mitigation program procedures is presented in Figure 2-1.

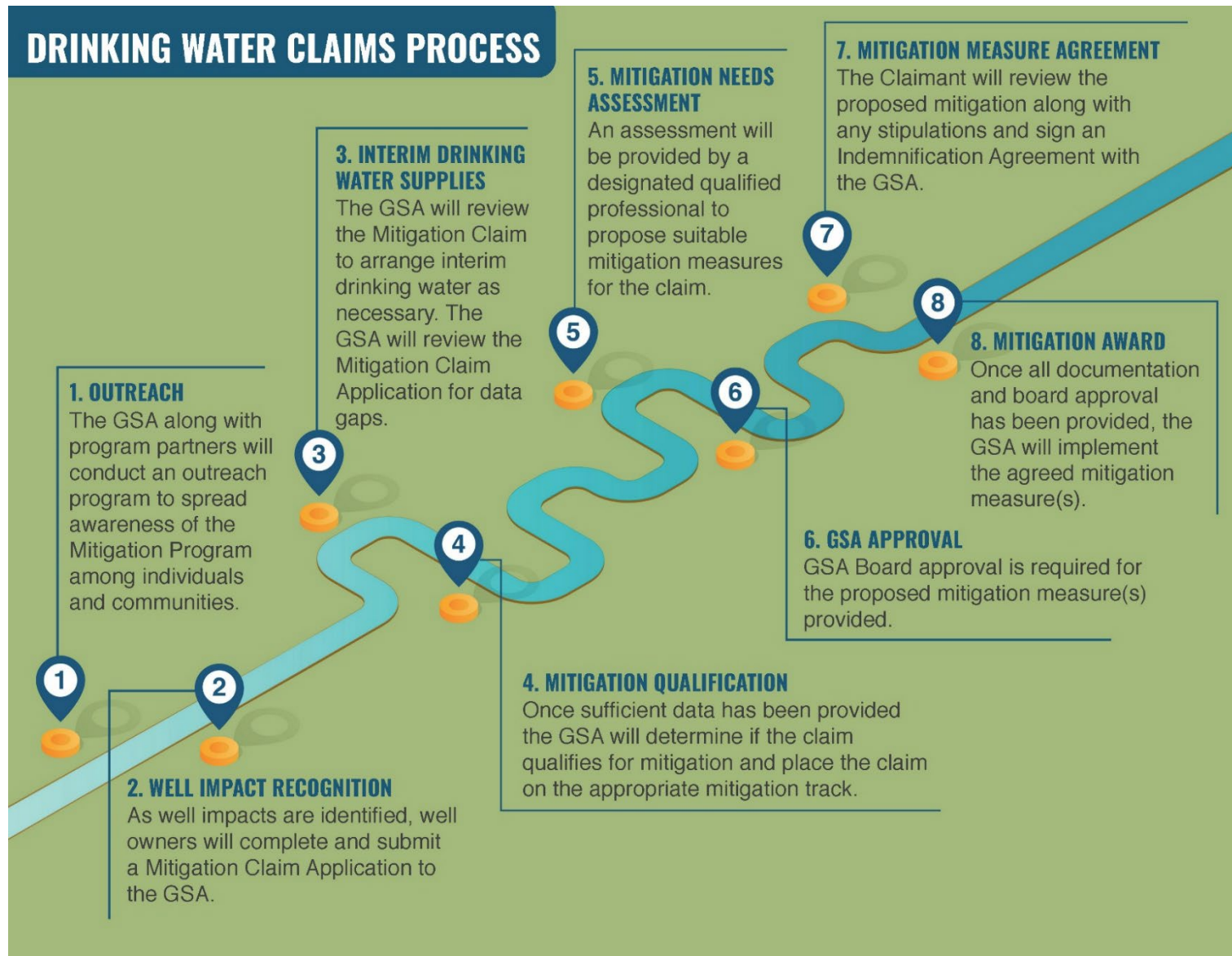


Figure 2-1. Mitigation Program Procedures Outline

2.1 Active Program Management

As the GSA gathers data and understanding from changes in demand management, projects, improved analysis tools, and well registration program, the Mitigation Program is expected to be updated. In addition to improved data and analytics, lessons will be learned through the implementation of the Mitigation Program. Costs to mitigate wells, provide interim supplies, and administration will likely change over time. The GSA intends for the Mitigation Program to be iterative and adapt as new information, funding, and efficiencies are understood.

3 Mitigation Program Tracks

The Mitigation Program has two tracks: (1) Well Mitigation Track and (2) Technical Assistance Track. Figure 3-1 illustrates how the GSA categorizes claims into the appropriate track. More detail on the application process for each track is described under their respective sections of this Program (starting on Page 10 for the Mitigation Track and Page 15 for the Technical Assistance Track).

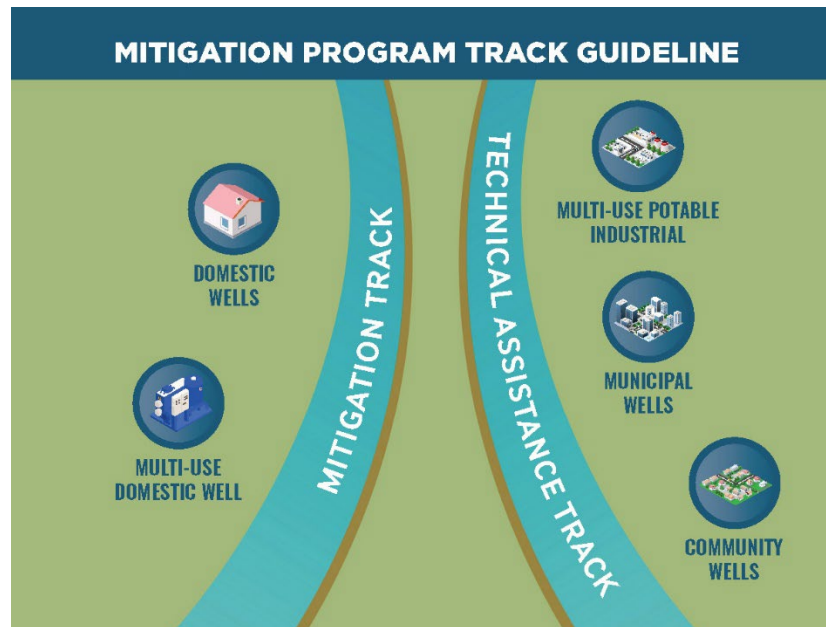


Figure 3-1. Mitigation Program Track Guideline

3.1 Well Mitigation Track Description

The Well Mitigation Track provides emergency drinking water supplies within 24 hours of notification to the GSA and interim drinking water (hailed tank water) within 72 hours. Long-term mitigation solutions for domestic wells and multi-use domestic wells that have been impacted and meet the qualification criteria are presented in Section 5. Multi-use domestic wells are agricultural wells that also supply drinking water to at least one household. Agricultural wells used solely for agricultural purposes are not eligible for assistance under the Program.

Under this Mitigation Program, domestic wells and multi-use domestic wells are defined as having at maximum of four (4) service connections to four (4) separate households. More information on the application process for the Mitigation Track is presented in Section 4.

3.2 Technical Assistance Track Description

The Technical Assistance Track offers up to \$30,000 in funding to support technical assistance including grant development, feasibility planning, or other mechanisms that benefit small community wells, municipal wells, and potable industrial wells that have been impacted. All wells must meet the eligibility criteria presented in Section 5 to be eligible for the Mitigation Program.

Under this Mitigation Program, small community wells are defined as wells or a system of wells that serve between 5 and 299 connections with a year-round population of no more than 2,299 people. Municipal wells are defined as wells or systems of wells that serve more than 300 connections with a year-round population of at least 3,300 people. Potable industrial wells are defined as wells used for both industrial and drinking water purposes. Industrial wells that do not serve drinking water purposes do not qualify under this Mitigation Program.

4 Well Mitigation Claims Process

The Well Mitigation Claims Process is designed to facilitate the most suitable mitigation for both the potential Claimant and the GSA. This process serves to verify eligibility for the program where (1) if an impact occurred prior to January 2015, then the GSA is not responsible for the impact, (2) the well impact must have been induced by undesirable results associated with the lowering of groundwater levels, and (3) impacts to groundwater quality associated with groundwater pumping. This program is intended to address only wells that go dry or have water quality impacts after the date of approval of this program. The GSA will provide educational materials on well stewardship to a disqualified Claimant upon request.

The general outline of the Well Mitigation Program is illustrated in Figure 2-1. Detailed explanations of the mitigation tracks that comprise the Mitigation Program are provided in Section 4.1 for the Well Mitigation Track and information on the Technical Assistance Track is provided in Section 4.2.

4.1 Well Mitigation Track Process

The procedure for a claim placed under the Well Mitigation Track is summarized in Figure 4-1. The process is similar to those presented in Section 2 but additional details are presented. Copies of the expected claim application are presented in Attachment A, however these are subject to periodic updates. The steps that must be taken to satisfy a mitigation claim under the Well Mitigation Track are as follows:

1. **Outreach:** The GSA will conduct outreach to communities and well owners at risk of having their wells impacted by chronically declining groundwater levels. The primary focus of these outreach efforts will be to provide resources that connect well owners to the GSA and spread awareness of the Mitigation Program.
2. **Well Impact Recognition:** Well owners will self-identify the need for well mitigation (i.e. recognize that the well has a problem). The well owner will contact the GSA via phone or website to request well mitigation assistance.
3. **Interim Drinking Water Supplies:** The GSA will review the submitted application and provide emergency water and interim services as needed. Additional information or historical records may be requested from the well owner to better assess the claim.
4. **Claim Qualification:** The GSA will review all provided information to decide whether the claim is eligible for the Mitigation Program.
5. **Mitigation Track Placement:** Following the review of a mitigation claim, the GSA will place the claim under the Well Mitigation Track provided that (1) the mitigation claim meets all of the eligibility criteria and (2) the subject well is operated as a domestic or multi-use domestic well.
6. **Mitigation Measure Selection:** Qualified professionals will inspect the condition of the impacted well and report their assessment(s) to the GSA. The GSA will propose a suitable final long-term mitigation measure for eligible claims.

7. **Claimant Consultation:** Following the recommendation of an appropriate mitigation measure, the GSA and Claimant shall discuss the proposed mitigation measure. Mitigation measures are anticipated to be developed on a case-by-case basis. Criteria for selecting appropriate mitigation are presented in Section 4.1.1.
8. **GSA Approval:** The GSA Board will review the Long-Term Mitigation proposal, along with any Terms of Award and cost estimate, and will either motion to move forward with the proposed mitigation or seek alternative mitigation measures.
9. **Mitigation Measure Agreement:** The Claimant will review the mitigation measure(s) approved by the GSA Board and sign an indemnification agreement with the GSA.
10. **Mitigation Award:** Once the GSA Board approval is obtained, the GSA will implement the agreed mitigation measures.

DOMESTIC WELL MITIGATION TRACK GUIDELINE











	1. Outreach	The GSA, along with program partners, will conduct an outreach program to spread awareness of the Mitigation program among individuals and communities.
	2. Well Impact Recognition	As well impacts are identified, well owners will complete and submit a Mitigation Claim Application found under the SFK GSA website: https://southforkkings.org/
	3. Interim Drinking Water Supplies	The GSA will review the Mitigation Claim to arrange interim drinking water as necessary. Additional or historical information may be requested to better assess the claim.
	4. Claim Qualification	The GSA will review all the information provided to decide whether the claim is eligible for the Mitigation Program.
	5. Mitigation Track Placement	The GSA will place the claim under the Domestic Well Mitigation Track.
	6. Mitigation Measure Selection	Certified professionals will inspect the well condition and report their assessment to the GSA such that the GSA can identify a suitable mitigation measure.
	7. Claimant Consultation	The well owner will meet with the GSA to discuss the proposed mitigation measure for the claim.
	8. GSA Approval	GSA Board approval is required for the proposed mitigation measure(s) provided.
	9. Mitigation Measure Agreement	The well owner will review the proposed mitigation along with any stipulations and sign an Agreement with the GSA.
	10. Mitigation Award	Once all documentation and board approval has been provided the mitigation measures will be implemented.

Figure 4-1. Domestic Well Mitigation Track Guideline

4.1.1 Mitigation Actions

Once a well owner contacts the GSA, the interim well mitigation measures listed in Section 4.4.1.1 will be implemented. In the event a well qualifies for mitigation assistance through the claims process, the options that the GSA may consider for appropriate mitigation are listed in Section 4.1.1.2 for long-term mitigation measures. Each claim is unique, and the GSA recognizes the importance of treating each claim on a case-by-case basis. The GSA reserves the right to identify a mitigation action that is not listed in this Program.

4.1.1.1 *Interim Well Mitigation Actions*

In the event of drinking water loss, interim measures may be needed until long-term mitigation can be arranged. Interim mitigation is available through the GSA to ensure the claimant has access to emergency temporary drinking water while their claim undergoes the investigation and qualification phase to identify if the claimant qualifies for long-term mitigation through the Mitigation Plan.

4.1.1.2 *Long-Term Mitigation Actions*

Each claim is expected to be unique, therefore, the GSA reserves the right to identify appropriate mitigation options that may not be listed in this Mitigation Plan. Qualifying domestic water well claims may receive physical assistance and/or technical assistance. The mitigation efforts will be solely focused on the well and will not include other potentially affected items (e.g. landscaping). For multi-use wells, only the domestic well portion will be included in the mitigation program.

Mitigation measures for impacted domestic water wells could include one or more of the alternatives provided in Table 4-1.

Table 4-1. Long-Term Mitigation Measures for Domestic Wells

Mitigation Option	Mitigation Details
Well casing and/or screen repair	Installation of appropriate liners in the impacted well to repair damaged well casings and/or well screens.
Lower the Well Pump	If there is adequate separation between the pump intake and the bottom of the well, the pump may be lowered. Not viable if groundwater levels are within 20 feet of the bottom of the well.
Pump Repair/Replacement	The well pump must have been damaged by allowable continued overdraft conditions resulting in declining groundwater levels and/or land subsidence.
Replacement Well	Where repair of the casing or screen is not possible, a new replacement well may be drilled and constructed.
Well Deepening	Where space for a new well is limited, redrilling within the impacted well to a deeper depth may be necessary.
Public System Connection	If viable, the impacted property will be connected to a public water system.
Alternative Source	Provide an equivalent water supply from an alternate source.
Grant Support	Includes grant identification, writing, review, and submittal assistance to secure resources.
Other	The GSA may elect mitigation measures not explicitly listed in the Mitigation Program.

4.1.2 Well Mitigation Claims Process Schedule

A timeline for the Well Mitigation Application processing is provided in the figure below. This timeline outlines the events between the application submittal through the provision of interim drinking water. The schedule provided is non-binding and represents ideal time frames for when these processes can be

addressed. It is expected that droughts may impact on the proposed schedule; delays are anticipated due to the demand for wells.

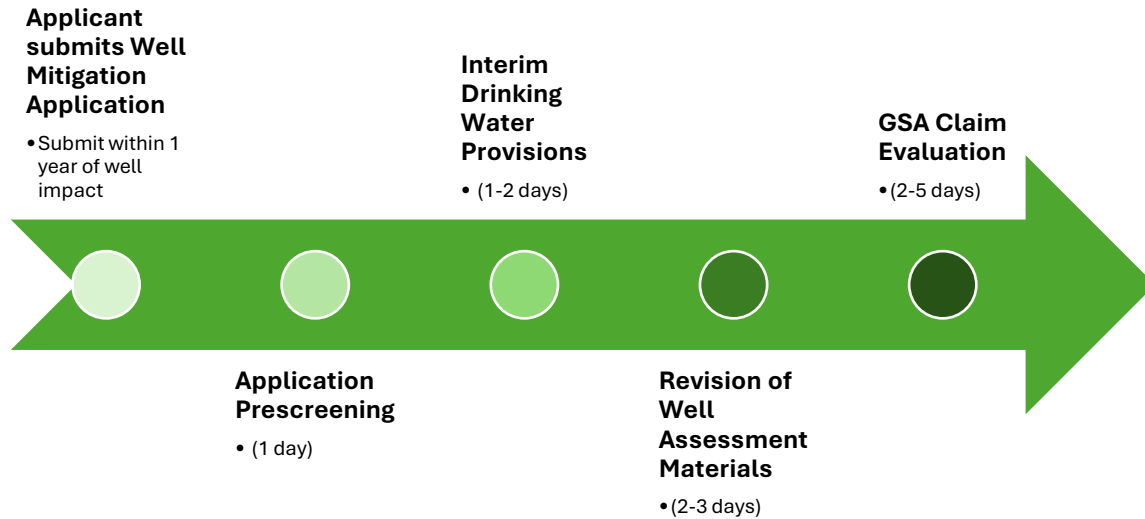


Figure 4-2. South Fork Kings GSA Well Mitigation Application Process Timeline

This schedule excludes the processing time for the provision and implementation of long-term mitigation as these actions vary depending on the impacted well needs and Claimant/GSA agreements.

4.2 Technical Assistance Application Process

The Mitigation Program includes a Technical Assistance Track for small community wells and municipal wells that have been impacted by groundwater management activities after January 1, 2015. Groundwater management activities for purposes of this Mitigation Program equate to GSA groundwater management policies. The Technical Assistance Track includes up to \$30,000 reimbursement funding for grant application development, contingency planning, feasibility study, or well design. The application process for the Technical Assistance Track is described below and in Figure 4-3.

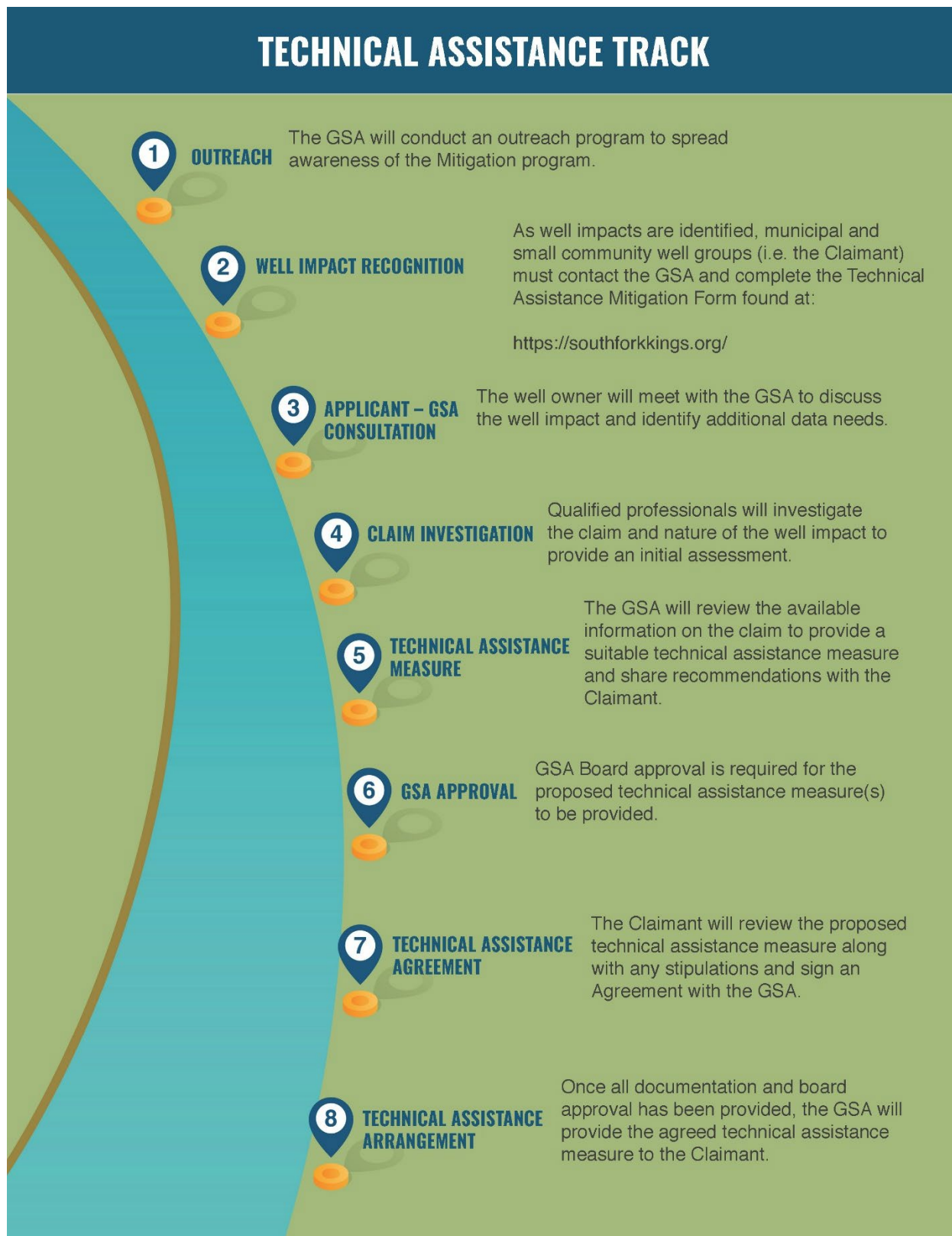


Figure 4-3. Technical Assistance Track

Following the completion and submittal of the Mitigation Claim application, the GSA will arrange to meet with the Claimant to discuss the impact, review the application, and identify any additional data needs. A qualified professional, arranged by the GSA will perform an assessment to determine the likely cause of impact and identify if the well qualifies for technical assistance.

Options for technical assistance include:

1. Grant application preparation
2. Well design
3. Contingency plan development
4. Feasibility plan development
5. With the agreement of the Claimant, financial assistance not to exceed \$30,000

These recommendations will be presented to the GSA Board for approval. Following approval by the Board, the GSA and the Claimant will enter into an agreement that acknowledges the amount of funding, intent of use, and indemnification for liabilities.

4.3 Claims Dispute

In the event a claim is denied by the GSA, the Claimant may appeal the decision to the GSA Board. If the Claimant disagrees with the mitigation proposed by the GSA, a mutually agreed upon third party shall be arranged by the GSA to perform their own evaluation.

4.4 Indemnification

Prior to SFK GSA issuing mitigation, the Claimant and GSA must enter a Mitigation and Indemnification Agreement (Attachment B). The indemnification aspect of the agreement's duty is to hold the GSA (and Program Partners) harmless for any adverse impacts to property, injury, income, etc. associated with implementation of the agreed upon mitigation measure.

5 Eligibility Criteria

Provided in this section are the eligibility criteria for both the well types and well impacts that can receive mitigation or technical assistance under the SFK GSA Mitigation Plan.

5.1 Eligibility Criteria for Well Uses and Operations

Assistance and mitigation under the SFK GSA Well Mitigation Program is only provided to eligible types. Further, the form of mitigation received is dependent on the Mitigation Program Track designated for an eligible well. An exhaustive list of eligible well types that can apply for mitigation is presented in Table X below.

Eligible Well Type(s)	Operation Description	Mitigation Program Track
Domestic Wells	An individual or isolated water well that extracts groundwater to meet domestic needs of a residence (must have less than four service connections).	Mitigation Track
Multi-use Domestic Wells	Domestic wells that support small scale irrigation; any wells extracting more than 2 acre-feet per year no longer qualify under the Mitigation Program.	Mitigation Track
Municipal Wells	Wells or systems of wells that serve more than 300 connections with a year-round population of at least 3,300 people.	Technical Assistance Track
Community Wells	State small water systems that serve 5 - 299 connections with a year-round population of no more than 2,299 people.	Technical Assistance Track
Multi-use Potable-Industrial Wells	Wells with services connections that support both industrial operations and supplying potable water.	Technical Assistance Track

Notable well types and well operations **not** covered in the SFK GSA Well Mitigation include Agricultural wells, industrial wells, commercial wells, or any well extracting more than 2 acre-feet of groundwater per year.

Eligibility not only considers the well operation or well type but also considers the nature of the well impact. Eligibility requirements for well impacts are further discussed in Section 5.2.

5.2 Eligibility Criteria for Well Impacts

Not all impacts to wells qualify for mitigation under this mitigation program. For example, a well's electrical or mechanical failure may be due to reasons independent of groundwater management activities adopted by the GSA. Therefore, criteria were established to determine if an application

qualifies for assistance under the Mitigation Program. The Mitigation Program’s qualification criteria are shown in Figure 5-1. The same criteria apply for both the domestic well mitigation track and the technical assistance track.

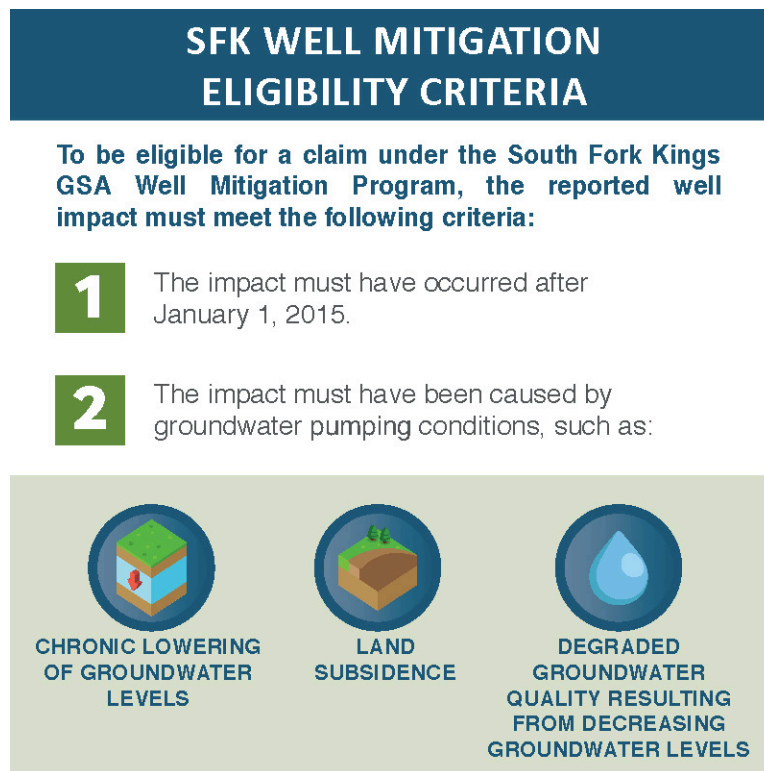


Figure 5-1. South Fork Kings Well Mitigation Eligibility Criteria

The SFK Well Mitigation Eligibility Criteria state that qualified wells must be impacted by either (a) chronic lowering of groundwater levels, (b) land subsidence or, (c) groundwater degradation resulting from GSA management policies. In addition, all well impacts must have occurred after January 1, 2015.

5.3 Well Mitigation Application and Reporting

Under the Mitigation Program, applications for well mitigation must be submitted by the landowner of the property serviced by the subject well. Well owners are encouraged to submit applications immediately upon impact. Reimbursement for impacts already mitigated is not eligible under this Program. Applications for impacts older than 1-year without comprehensive documentation of the impact may not qualify. Documentation that is relevant to the application includes photos of the well, photos and descriptions of site conditions, recorded groundwater level measurements, and groundwater quality data. The documentation is necessary as the current well conditions may not be representative of conditions during the time of impact, hindering an effective evaluation to assess qualification criteria. Well owners with incomplete documentation are encouraged to work closely with the GSA.

Application eligibility will be evaluated on a case-by-case basis. The application processes include evaluations of eligibility based on the qualification criteria. The evaluation of whether the impact

occurred due to the groundwater pumping will be conducted as outlined in Section 4. The SFK GSA Mitigation Claim Application can be viewed and referred to in Appendix A.

6 Mitigation Program Outreach

The SFK GSA will conduct an outreach campaign to promote the Mitigation Plan to individuals and communities. The outreach efforts will provide essential information on how to submit a claim and will encourage registration of all wells, including domestic supply wells. The outreach program will include the following actions:

1. Flyers will be mailed to all landowners within the SFK GSA notifying of them of the Well Mitigation Program.
2. Flyers and other outreach materials will be prepared in both English and Spanish.
3. Two (2) public workshops will be held in the GSA to notify the community of the Well Mitigation Program.
4. Domestic well owners identified through the SFK Well Registration program will receive additional notifications via email.
5. The Mitigation Plan will be posted prominently on the SFK GSA website. The website will include a dedicated page that outlines the SFK GSA Mitigation Program and provides detailed information to file a claim.
6. For those without access to the internet, forms and assistance filling out the forms will be provided by the GSA.

Additional outreach efforts may be conducted in accordance with the SFK GSA *Communication and Engagement Plan* currently being updated.

7 Well Registration

Existing domestic well records provided by the Department of Water Resources are incomplete and include inactive and abandoned wells therefore the exact locations of most domestic wells are not well documented. As such, the SFK GSA has committed to develop a well registration program by April 1, 2026 as required in the SFK GSA *Groundwater Well Registration Policy*. The purpose of registering wells is to create a baseline record for each well in the event of a future claim. This can be particularly beneficial for domestic water wells, as many of these wells' construction, maintenance, and exact location are considered data gaps.

The SFK well registration policy states that wells that extract less than two (2) acre-ft per year are deemed de minimis. The registration program requires the well owner to provide available information on well location, construction, water quality, and well maintenance history. A well must be registered with the GSA to be eligible for the Mitigation Program.

Additionally, if a well is registered it may be possible to request GSA assistance before the well goes dry. The GSA will provide technical assistance to well owners with dropping water levels identified through the on-going groundwater monitoring program.

8 Funding

Funding for the well mitigation program will be generated through a combination of groundwater pumping fees and land assessment fees to be determined by the SFK GSA Board. A reserve fund of one million five hundred thousand dollars (\$1,500,000.00 or \$1.5M) is expected to be established by the end of 2026. Once the reserve fund has been fully established, any claims will be charged to this amount. If the reserve fund drops below five hundred thousand dollars (\$500,000.00), additional funds will be generated at such time.

Appendix A

SFK GSA Mitigation Claim Application

South Fork Kings GSA Mitigation Claim Application

Pre-Qualification Information

Please circle "Yes" or "No" in response to the questions presented below:		
<i>For domestic water well claims, is an interim water supply such as bottled water or water tank requested?</i>	Yes	No
<i>As the Claimant, will you allow physical access to the adversely impacted well for the GSA or authorized third-party to perform a field investigation?</i>	Yes	No
<i>Is the Claimant the owner¹ of the adversely impacted well in which this claim application applies?</i>	Yes	No

Please describe the reason behind this mitigation claim application:

¹ The Claimant must own the asset of the claim application. If you are not the owner of the impacted well, please provide the contact information of the owner to support the GSA in pursuing communication on the Mitigation Program.

Claimant Information

Date:		
First Name:	Last Name:	Middle Initial:
Address:	City:	Zip:
Mailing Address:		
Phone Number(s)	Primary:	Other:
Email:		
APN:		
Property Size: acres		

Number of Living Units:

Unit 01 Address: _____

Unit 02 Address: _____

Unit 03 Address: _____

Please circle a response:

Is the property within city limits? Yes No Unsure, request GSA assistance to confirm.

Is there a nearby Water System? Yes No Unsure, request GSA assistance to confirm.

Is the water main in front of the home? Yes No Unsure, request GSA assistance to confirm.

Is the property within a flood zone? Yes No Unsure, request GSA assistance to confirm.

Impacted Well Information

Please circle a response:

Impacted well's use:	Domestic	Agricultural	Unsure
Shared well?	Yes	No	Unsure
Shared well agreement?	Yes	No	Unsure
Well water source:	Groundwater	Spring	Other
Units connected to well:	1	2 -4	5+

Please provide as much of the following documentation as is available

Information and supporting documentation are requested in order to expedite the claims process and potential mitigation. In the event that sufficient information is not available to deliver an appropriate mitigation measure or possible causation of well impact, the claim may be disqualified.

- Well completion report
- Well design documentation
- Water Level Records
- Photos
- Maintenance records
- Driller name and contact information
- Water quality records and/or lab reports
- Documentation from neighboring wells' construction, operations, and maintenance

Please fill out the following information to the best of your ability. Additional information may be requested by the GSA in addition to a site visit:

Do you have an idea what the impacted well's issue may be? If so, please explain:	
When was the well installed?	
When did the well become operational?	
When did the well become non-operational?	
Depth of well	
Perforated intervals	
Size of pump	
Depth of pump in well	
Is the condition of the pump serviceable?	
Has the pump been removed from the well?	
When was the last modification to the well made? What was the modification?	
Has the well been abandoned? If so, why?	

Does the well have a pump saver?	
What is the designed capacity of the well?	
What is the recent capacity of the well (note units including daily or monthly)	
Has the well experienced water quality issues? If so, when?	
Have neighboring wells experienced water quality issues? If so, when?	
Is the well located near septic? If so, please provide more information.	

Sketch of Well Site Map

Please include any of the following in the sketch:

- Property boundaries
- Structures
- Cross Streets/Roads
- Fences/Gates
- Access
- North Arrow
- Septic Tank/Leach Lines
- Driveways
- Trees
- Power Poles/Lines
- Existing Wells
- Neighboring homes/properties
- Distance of connection(s) if known
- Dogs/Animals on the property

Annotated photos or aerial images of the property may be used in place of a sketch.

Please also attach photos of the impacted well and pump.

Appendix B

Mitigation and Indemnification

**South Fork Kings Groundwater Sustainability Agency Mitigation and
Indemnification Agreement**

This Well Mitigation and Indemnification Agreement between the South Fork Kings Groundwater Sustainability Agency (“SFK GSA”) and the signatory (the “Claimant”) ratifies that SFK GSA will award mitigation assistance to the Claimant upon agreement of the following terms:

1. The Claimant will indemnify and hold harmless SFK GSA, its Board of Directors, Staff, Consulting Staff, Advisory Committee Members, Technical Advisory Committee Members, Offices, Third-Party Facilitators from any and all claims, suits, actions, and liability of any character arising or alleged to arise, out of injuries or damages sustained by any person, persons, or property on account of the Claimant’s act or omission, neglect, or misconduct, or in violation of any law, ordinance, or regulation, which was caused to occur during the Claimant’s mitigation development or implementation.
2. SFK GSA shall not be liable to the Claimant’s staff or guests for any injury incurred while on the property in which mitigation will take place.
3. The Claimant is responsible for paying all taxes owed for income or property value the Claimant receives as a result of the mitigation measure.
4. SFK GSA is awarding the following mitigation measure(s) to the Claimant:

GSA Manager Name: _____

Claimant Name: _____

GSA Manager Signature: _____

Claimant Signature: _____

Date: _____

Date: _____