

Stakeholder Outreach Report

June 17, 2021

Stakeholder Communication

INTERESTED PERSONS EMAIL LIST – as of May 2021

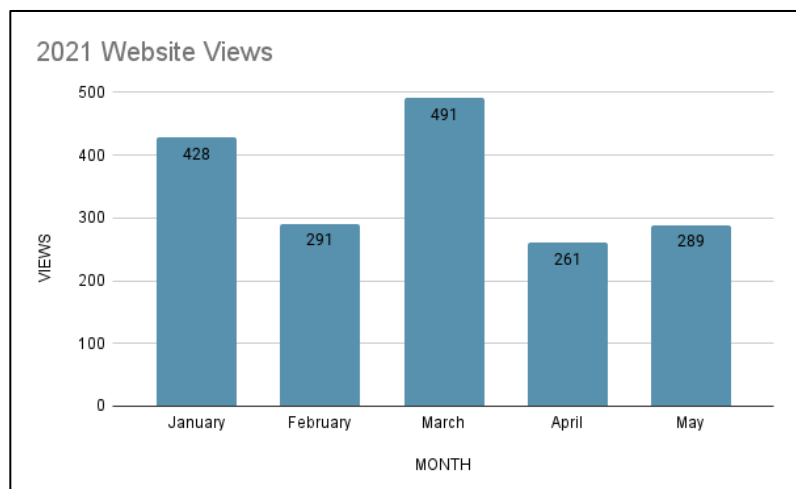
- 228 interested persons

EMAIL CORRESPONDANCE- January – May 2021

EMAIL UPDATES TO INTERESTED PERSONS				
Date	Email Topic	# of recipients	Open Rate	Click-thru Rate
1/18/2021	This Thursday: South Fork Kings GSA Board Meeting	229	34%	35%
1/29/2021	South Fork Kings GSA Updates	229	32%	19%
3/26/2021	South Fork Kings GSA March Updates	229	29%	21%
4/5/2021	South Fork Kings Finance Committee 4/9 Finance Committee Meeting	228	33%	20%
4/12/2021	South Fork Kings Board Meeting 4/15	228	31%	30%
4/23/2021	Water Year 2020: Annual Report Update	229	37%	26%
5/10/2021	South Fork Kings GSA Finance Committee Meeting	228	35%	30%
6/16/2021	NRCS Offers Funding for Growers to Implement Conservation Practices and Increase Drought Resilience	229	31%	3%

Digital/Online

2021 WEBSITE VIEWS		
MONTH	VEIEWS	Top Page
January	428	GSP Portal
February	291	GSP Download
March	491	GSP Download
April	261	Annual Report Update
May	289	GSP Portal



Website Articles		
Date	Title	Views
1/25/2021	Progress made on ASR pilot test	27
1/25/2021	Frank Gornick appointed to represent City of Lemoore on Board	11
1/25/2021	Tulare Lake Subbasin Annual Report to the State in progress	20
3/24/2021	ASR Pilot Test set for early April & more grant funding on its way	20
3/24/2021	Groundwater monitoring: What is the best program for South Fork Kings GSA?	15
3/24/2021	Important considerations for Fiscal Year 2022	12
3/24/2021	Board authorized payment to gain access to Land IQ data for Annual Report	5
4/23/2021	Groundwater in the Tulare Lake Subbasin: Annual Report Update	26

Annual Report Outreach

- [Website post](#)
- [Email update](#)
- Infographic

Landowner Surveys

LANDOWNER SURVEY

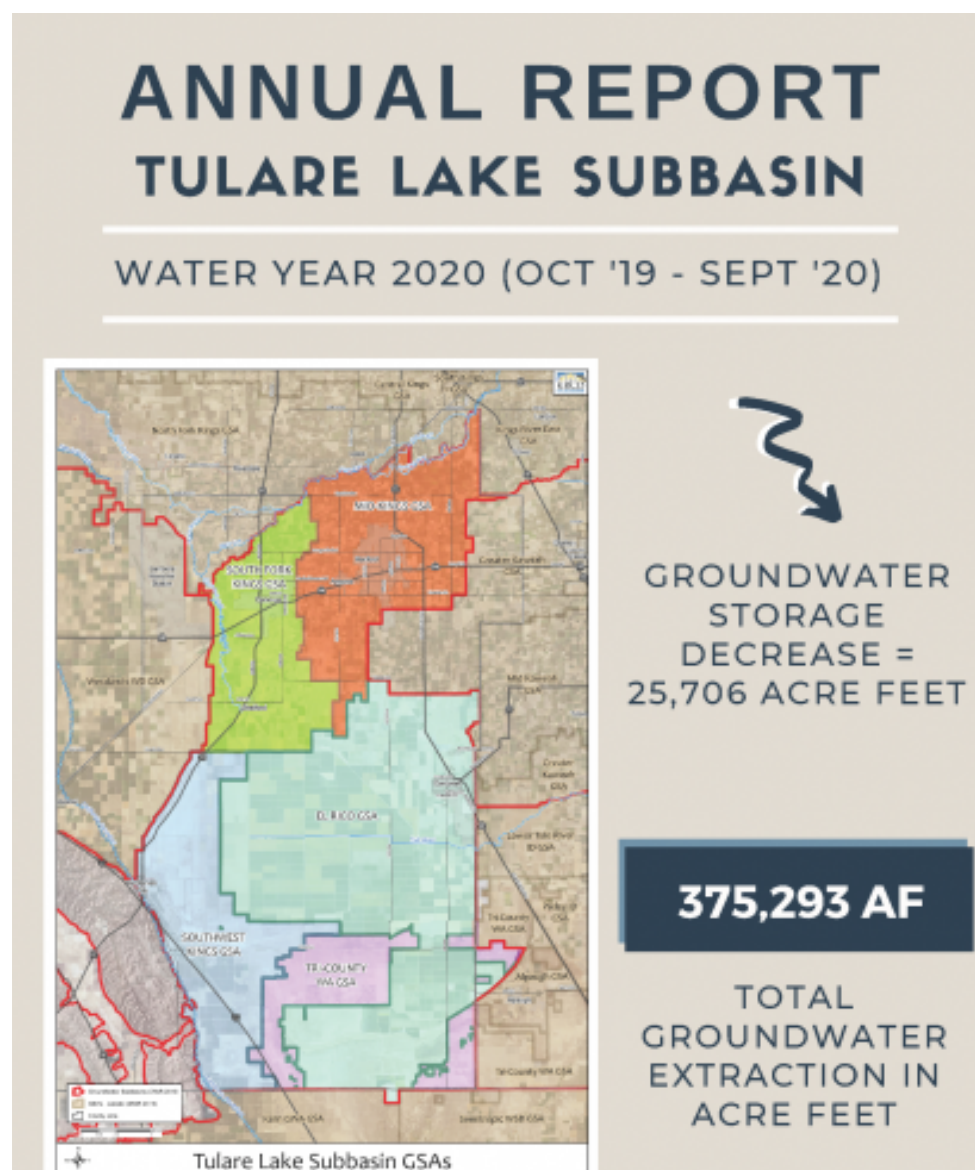
Staff continues to coordinate with the GSA's technical consultant to develop landowner surveys. Three surveys will be conducted under the California Resiliency Challenge grant with the goal of collecting information on groundwater use and climate impacts on groundwater supply. The first survey will focus on understanding stakeholders' sentiments on climate impacts to groundwater supply. The two subsequent surveys will focus on groundwater use and well information.

Completed tasks to date include:

- Survey #1: Drought impacts on groundwater mailed to all SFKGSA landowners the second week of June.
 - Survey mailer included:
 - cover letter to introduce SFKGSA, SGMA, and the survey purpose
 - 2-page survey
 - Color insert promoting ASR work to sustain groundwater in the region
 - Postage paid interior envelope for survey returns
 - A/B mailer test – tested exterior envelope messaging
 - Received 18 responses to date
 - Amazon gift card incentive
 - Responses due June 30, 2021
- Survey #2: preliminary discussions on developing a robust digital survey format to collect needed groundwater information

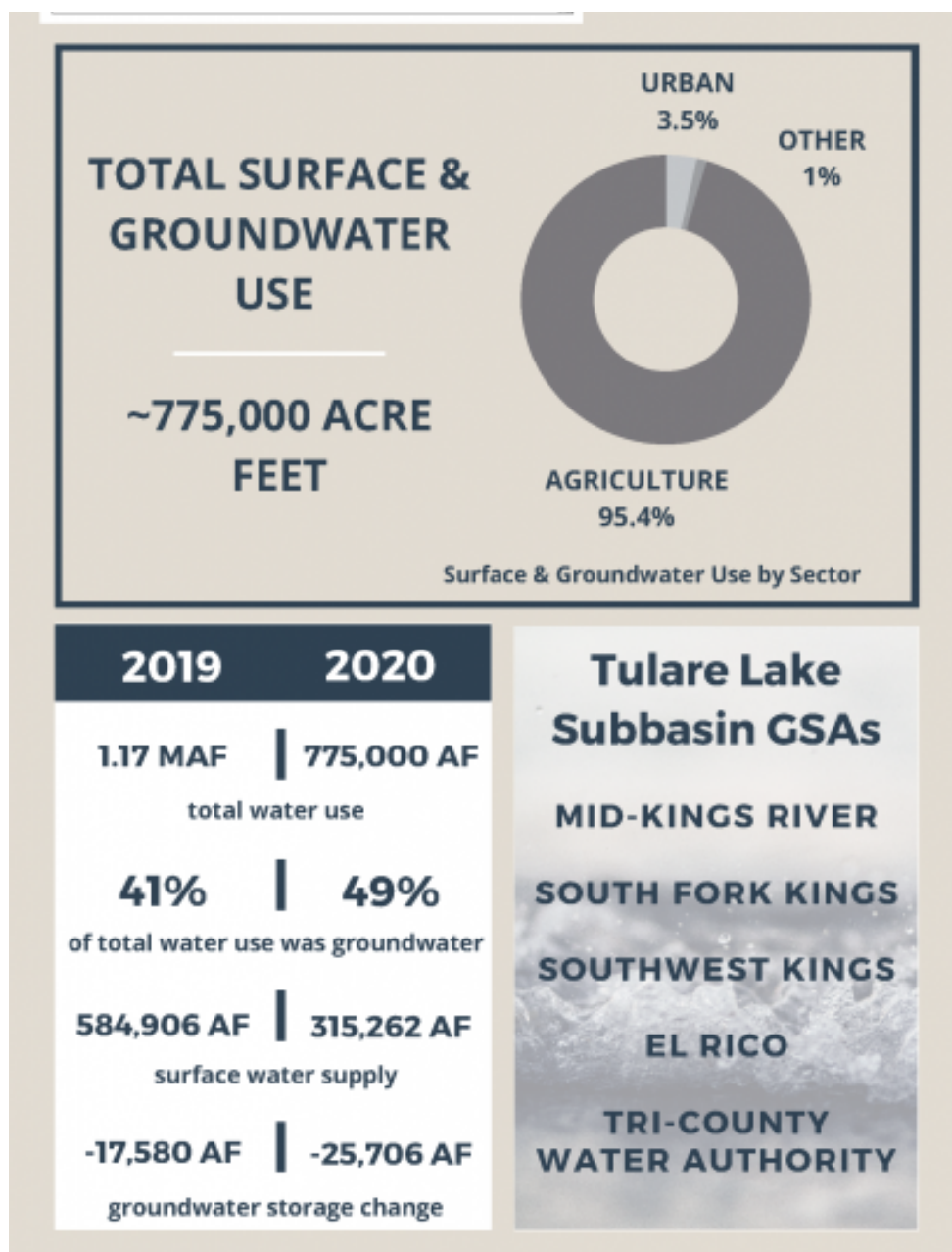


[Home](#) / [News](#)



The South Fork Kings GSA (SFKGSA), together with the four other GSAs in the Tulare Lake Subbasin, submitted the second **Annual Report** to the **CA Department of Water Resources (DWR)** by the April 1, 2021 deadline.

Dryer conditions in water year



2020 (Sept 2019 – Oct 2020) strained groundwater supplies across the Tulare Lake Subbasin, evidence that cooperation among groundwater users and strategic surface supply management will be critical to achieving sustainability by 2040.

The Annual Report includes an overview of

groundwater conditions in the region including groundwater extraction, surface water supply available for groundwater recharge, total water use, change in groundwater storage, and a description of progress made toward implementing the Groundwater Sustainability Plan (GSP) since the last Annual Report.

The Sustainable Groundwater Management Act (SGMA) requires Groundwater Sustainability Agencies (GSAs) to submit annual reports to the Department of Water Resources (DWR) on April 1 of every year.

The Tulare Lake Subbasin extracted 100,000 acre-feet (AF) less than the prior water year, but due to dryer conditions during Water Year 2020, the Subbasin also saw an overall decrease of 25,706 AF in groundwater storage as observed

in this year's Annual Report. As we review the Annual Report and consider its implications as we enter another dry water year, SFKGSA will continue to implement innovative projects that will lead to a sustainable, resilient, and steadfast supply of groundwater for the region.

Here are a few SFKGSA highlights from the Tulare Lake Subbasin's 2020 Annual Report:

SFKGSA participated in discussions with the San Joaquin Valley Blueprint to increase water supplies to the area.

Based on several wells being destroyed or inaccessible, SFKGSA worked with local landowners to modify the **groundwater monitoring network**. Access agreements were obtained for the modified network to ensure its long-term availability.

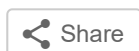
SFKGSA applied for and was awarded a grant from the California Resilience Challenge to implement an **Aquifer Storage and Recovery (ASR) Pilot Test**. Click [HERE](#) to learn more about this supply enhancement program and the progress made thus far.

SFKGSA participated in **coordination meetings** between the Kaweah and Tulare Lake Subbasins. The purpose of the meetings was to identify issues, discuss boundary conditions, and share data across the region. These meetings are expected to continue to help provide common solutions to regional issues. SFKGSA will continue to engage with neighboring subbasins and GSAs to promote inter-basin coordination.

Click [HERE](#) to read full Annual Report.

To receive updates on these projects and more, groundwater conditions, and other ways to get involved with the work SFKGSA is doing, sign up for our [E-Updates](#) and visit our website at southforkkings.org.

Share this:





Next

Board authorized payment to gain access to Land IQ data for Annual Report

ABOUT SFKGSA

South Fork Kings GSA is a California Joint Powers Authority formed to implement the Sustainable Groundwater Management Act in the northwestern part of the Tulare Lake Subbasin.

CONTACT US

Mailing Address

4886 East Jensen Avenue
Fresno, CA 93725

Phone: (559) 242-6118



[SB 272 Compliance](#)

[State Controller's Government Compensation](#)

[Home](#) [About](#) [Board of Directors](#) [Groundwater Sustainability Plan](#) [Prop 218 Assessment](#) [News](#) [Resources](#)
[Contact Us](#)

© 2021 South Fork Kings GSA

[Translate »](#)



SOUTH FORK KINGS GROUNDWATER SUSTAINABILITY AGENCY

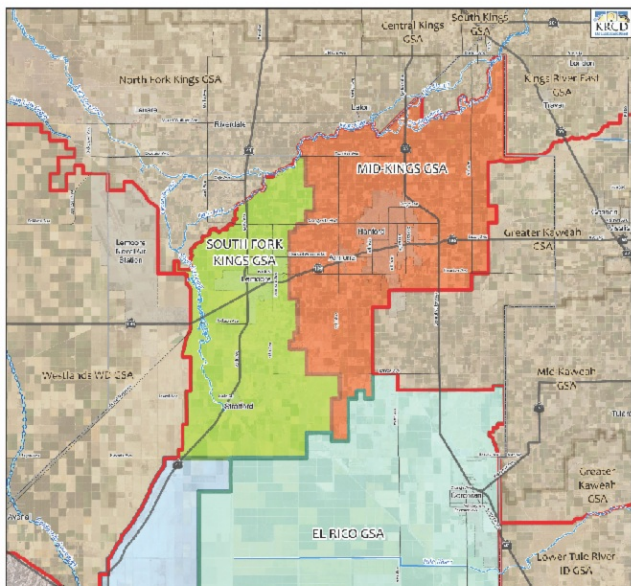
Groundwater in the Tulare Lake Subbasin: Annual Report Update

The South Fork Kings GSA (SFKGSA), together with the four other GSAs in the Tulare Lake Subbasin, submitted the second [Annual Report](#) to the [CA Department of Water Resources \(DWR\)](#) by the April 1, 2021 deadline. Drier conditions in water year 2020 (Sept 2019 – Oct 2020) strained groundwater supplies across the Tulare Lake Subbasin, evidence that cooperation among groundwater users and strategic surface supply management will be critical to achieving sustainability by 2040.

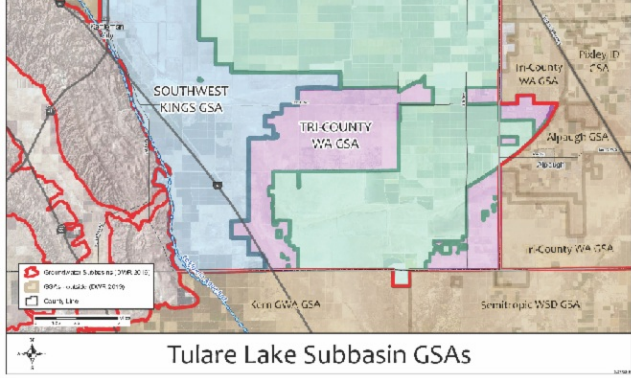
The Annual Report includes an overview of groundwater conditions in the region including groundwater extraction, surface water supply available for groundwater recharge, total water use, change in groundwater storage, and a description of progress made toward implementing the Groundwater Sustainability Plan (GSP) since the last Annual Report.

ANNUAL REPORT TULARE LAKE SUBBASIN

WATER YEAR 2020 (OCT '19 - SEPT '20)



GROUNDWATER
STORAGE
DECREASE =
25,706 ACRE FEET

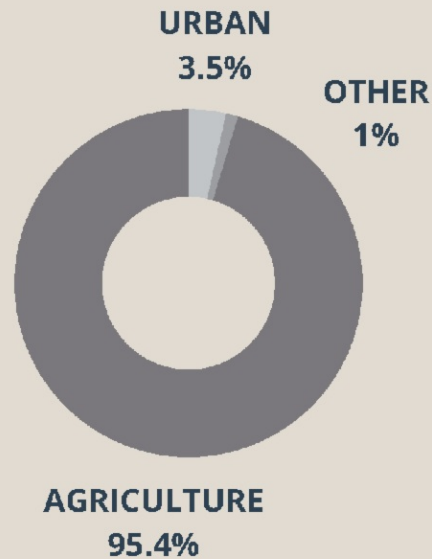


375,293 AF

**TOTAL
GROUNDWATER
EXTRACTION IN
ACRE FEET**

**TOTAL SURFACE &
GROUNDWATER
USE**

**~775,000 ACRE
FEET**



Surface & Groundwater Use by Sector

2019

2020

1.17 MAF

775,000 AF

total water use

41%

49%

of total water use was groundwater

584,906 AF

315,262 AF

surface water supply

-17,580 AF

-25,706 AF

groundwater storage change

**Tulare Lake
Subbasin GSAs**

MID-KINGS RIVER

SOUTH FORK KINGS

SOUTHWEST KINGS

EL RICO

**TRI-COUNTY
WATER AUTHORITY**

The Tulare Lake Subbasin extracted 100,000 acre-feet (AF) less than the prior water year, but due to dryer conditions during Water Year 2020, the Subbasin also saw an overall decrease of 25,706 AF in groundwater storage as observed in this year's Annual Report.

As we review the Annual Report and consider its implications as we enter another dry water year, SFKGSA will continue to implement innovative projects that will lead to a sustainable, resilient, and steadfast supply of groundwater for the region. **Here are a few SFKGSA highlights from the Tulare Lake Subbasin's 2020 Annual Report...**

[Read More](#)

Questions on the Groundwater Sustainability Plan?

Check out our FAQ resource for the answers:

[GSP
FAQs](#)

Next Board Meeting

Thursday, June 17, 2021

5:30 PM

Zoom web/teleconference details will be shared closer to the meeting

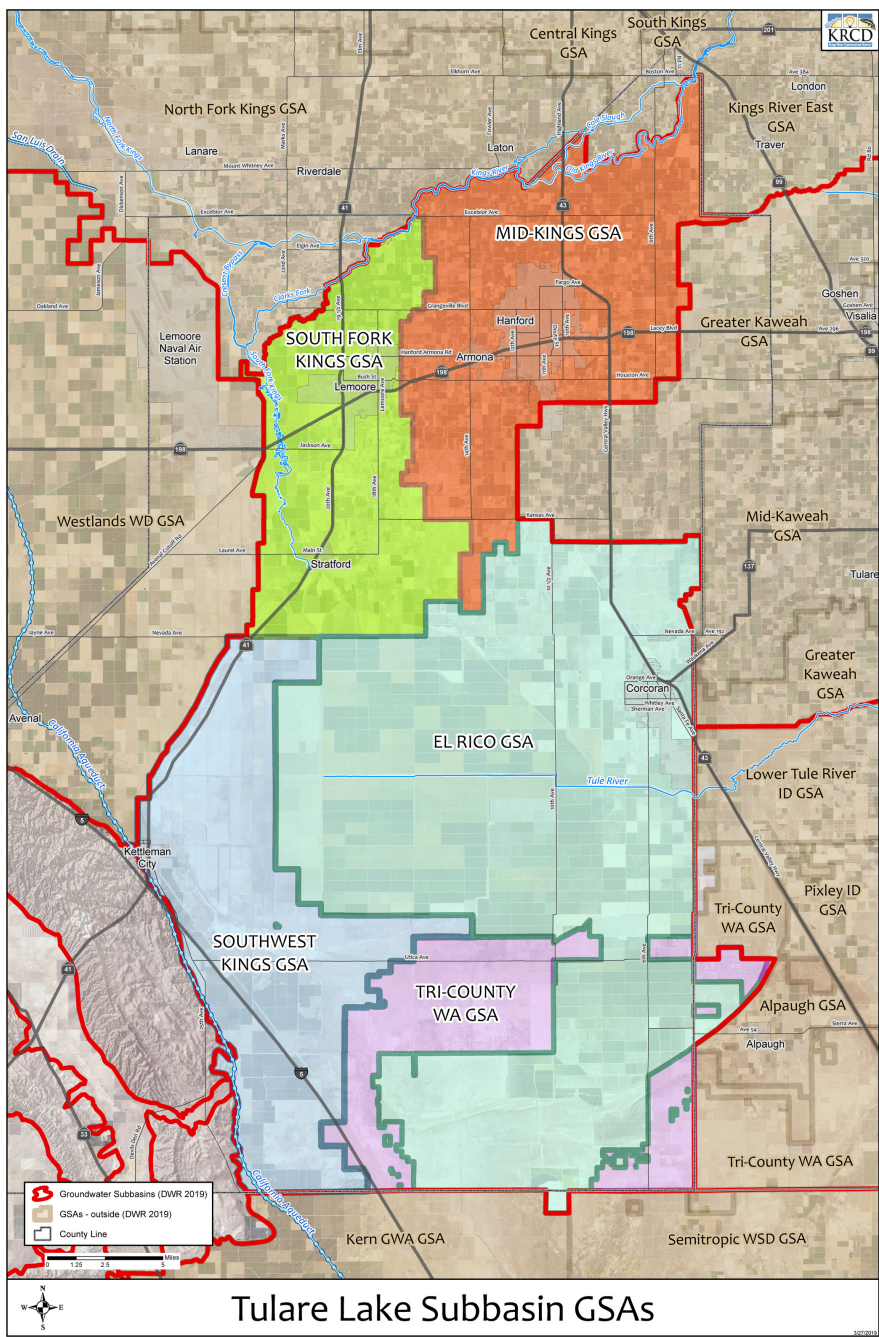
Please check the [website](#) regularly for updates

South Fork Kings GSA | SouthForkKings.org

ANNUAL REPORT

TULARE LAKE SUBBASIN

WATER YEAR 2020 (OCT '19 - SEPT '20)



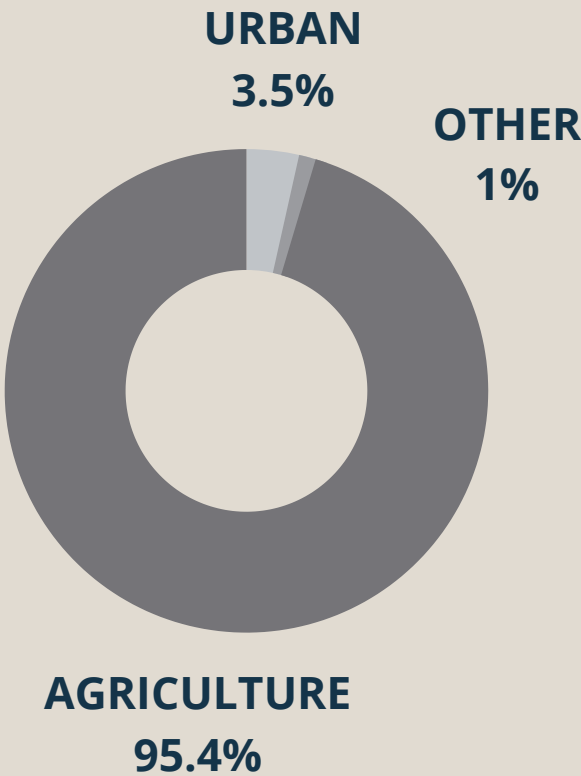
GROUNDWATER
STORAGE
DECREASE =
25,706 ACRE FEET

375,293 AF

TOTAL
GROUNDWATER
EXTRACTION IN
ACRE FEET

TOTAL SURFACE & GROUNDWATER USE

~775,000 ACRE
FEET



Surface & Groundwater Use by Sector

2019

2020

1.17 MAF

775,000 AF

total water use

41%

49%

of total water use was groundwater

584,906 AF

315,262 AF

surface water supply

-17,580 AF

-25,706 AF

groundwater storage change

**Tulare Lake
Subbasin GSAs**

MID-KINGS RIVER

SOUTH FORK KINGS

SOUTHWEST KINGS

EL RICO

**TRI-COUNTY
WATER AUTHORITY**